



see detail of #12 below



detail of #12

## Cambo Wide DS

### Accessories



- A Viewfinder
- B Roll Film Holder
- C Fidelity Double Sheet Film Holders
- D Polaroid 545Pro Film Holder
- E Reflex Viewing Hood
- F In-Line Viewing Hood
- G Binocular Viewing Hood
- H Viewfinder Masks
- I Magnifying Loupe
- J Focusing Cloths

Not shown:

- Center Filters
- Additional Lens Systems

### Basic Specs

**Movements:** Lateral Shift: +20/-20mm  
Vertical Shift: +40/-20mm

*Note: These are the mechanical limitations of the lens plate movements; optical limitation depend on Lens/Format combination.*

**Size (L x W x H):** 228 x 219 x 133mm (9 x 8.5 x 5.25")\*  
**Weight :** 1.7 kgs (3.7 lbs)\*

\*with default 47XL lens

CAMBO FOTOGRAFISCHE INDUSTRIE BV  
HAATLANDERDIJK 45 - P.O.BOX 200  
NL-8260 AE KAMPEN  
THE NETHERLANDS  
PHONE: +31 38 3314644  
FAX: +31 38 3315110  
EMAIL: info@cambo.com

Your CAMBO Distributor:

Web: www.cambo.com

## Cambo Wide DS

### Features

1. Camera Body
2. Horizontal Scale
3. Viewfinder (optional)
4. Viewfinder Mask
5. Lens Plate Locking Lever
6. Horizontal-Shift Locking Knob
7. Horizontal-Shift Control Knob
8. Removable Cable Release
9. Vertical-Shift Control Knob
10. Vertical-Shift Locking Knob
11. Strap and Accessory Eyelet
12. Three Way Spirit Levels
13. Vertical Scale
14. Ground-Glass Back-Assembly Release Levers
15. Rotating-Back Locking Lever
16. Removable Ground-Glass Back
17. Removable Digital Back Plate



Rotating back default on all analog models except WDS-510 which has landscape ground glass back



**CAMBO**

CAMBO is a registered trademark, all rights reserved.



# Multiformat - Analog and Digital Cambo Wide DS

**T**his new portable, multiformat camera system is the product of Cambo's 60 plus years of camera-design experience. A favorite among architectural and landscape photographers for decades, the Cambo Wide's newest model represents the latest generation of this popular style and incorporates many exciting innovations.

**CAMBO**

## High End Digital Photography

Introducing Schneider's new DIGITAR XL series lenses, designed for excellent performance, optimised for digital high-end photography in a dedicated lens mount combined with a universal mount for many digital camera backs on the existing Cambo Wide DS body, Cambo offers a unique camera system for the architectural shooter who needs perspective control in combination with digital wide angle photography.

The Cambo Wide DS-350 is a complete camera that accepts digital backs such as Leaf, PhaseOne, Imacon, EyeLike or Sinar with mounts for Hasselblad V-series, Hasselblad H-1, Mamiya 645AFD or Contax 645 compatible backs. The preferred chipsize is the current 22 megapixel format of approx. 4x5cm.

The Wide DS's double shift allows for combined vertical and horizontal movements for perspective control. The movements in the "filmplane" even offer the possibility for stitching images together utilising the lens' maximum viewing angle.

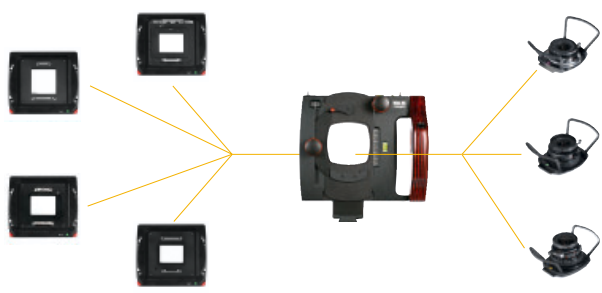
Schneider's Digitar 5.6/35 XL offers up to 90mm of image circle (102°) at f/11 with high optical resolution, which allows for up to 18mm shift into either direction without loss of image quality. Schneider's Digitar 5.6/24 XL in combination with a 22 megapixel back even offers up to 90° of viewing angle, while the 16 or 17 megapixel CCD's would allow for a 5mm shift using the 5.6/24 XL Digitar. For those who need a longer perspective Cambo offers Schneider's 5.6/47 XL Digitar that allows for full movements.



Image captured with Digitar 5.6/35 XL with 6 mm vertical shift on a Leaf Valeo 22

Most of the recent digital backs offer portability with built-in storage and image review, which offers great opportunities in combination with Cambo's Wide DS system for interior, exterior and landscape photography and high resolution images for the demanding professional photographer.





Twelve complete **Wide DS Digital** cameras are available with their characteristics:

**WDS-240** with Hasselblad-V mount features Schneider Digitar 5.6/24mm XL viewing angle 100° - image circle 60mm (at f/11)

**WDS-350** with Hasselblad-V mount features Schneider Digitar 5.6/35mm XL viewing angle 102° - image circle 90mm (at f/11)

**WDS-470** with Hasselblad-V mount features Schneider Digitar 5.6/47mm XL viewing angle 110° - image circle 113mm (at f/11)

**WDS-241** with Hasselblad-H1 mount features Schneider Digitar 5.6/24mm XL viewing angle 100° - image circle 60mm (at f/11)

**WDS-351** with Hasselblad-H1 mount features Schneider Digitar 5.6/35mm XL viewing angle 102° - image circle 90mm (at f/11)

**WDS-471** with Hasselblad-H1 mount features Schneider Digitar 5.6/47mm XL viewing angle 110° - image circle 113mm (at f/11)

**WDS-242** with Contax 645 mount features Schneider Digitar 5.6/24mm XL viewing angle 100° - image circle 60mm (at f/11)

**WDS-352** with Contax 645 mount features Schneider Digitar 5.6/35mm XL viewing angle 102° - image circle 90mm (at f/11)

**WDS-472** with Contax 645 mount features Schneider Digitar 5.6/47mm XL viewing angle 110° - image circle 113mm (at f/11)

**WDS-243** with Mamiya 645AFd mount features Schneider Digitar 5.6/24mm XL viewing angle 100° - image circle 60mm (at f/11)

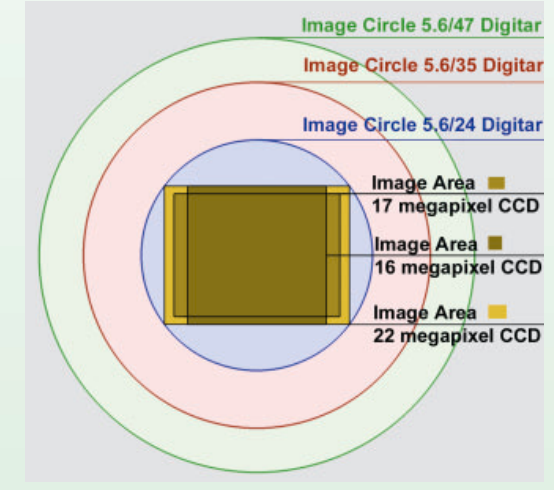
**WDS-353** with Mamiya 645AFd mount features Schneider Digitar 5.6/35mm XL viewing angle 102° - image circle 90mm (at f/11)

**WDS-473** with Mamiya 645AFd mount features Schneider Digitar 5.6/47mm XL viewing angle 110° - image circle 113mm (at f/11)



**Technical Specifications Digital version:**

- Lens design:** Schneider Digitar 5,6/24 XL  
Schneider Digitar 5,6/35 XL  
Schneider Digitar 5,6/47 XL
- Movements:** Lateral Shift +20/-20mm  
Vertical Shift +34/-26mm (mechanical limitations)
- Available for:** Hasselblad V compatible backs  
Hasselblad H1 compatible backs  
Contax 645 compatible backs  
Mamiya 645AFd compatible backs
- Size (LxWxH):** 220 x 219 x 120mm  
8.5 x 8.5 x 4.75"
- Weight:** 1.925 kg (4.2 lbs.)
- Specifications include Digitar 5,6/35 XL lens and MF adapter plate



Six complete Wide DS analog cameras are available with their characteristics:

**WDS-510** features Schneider S-Angulon 5.6/38mm XL viewing angle 120° - image circle 137mm (at f/22)

**WDS-515** features Schneider S-Angulon 5.6/47mm XL viewing angle 120° - image circle 166mm (at f/22)

**WDS-520** features Schneider S-Angulon 5.6/58mm XL viewing angle 110° - image circle 166mm (at f/22)

**WDS-525** features Schneider S-Angulon 5.6/72mm XL viewing angle 115° - image circle 226mm (at f/22)

**WDS-530** features Schneider S-Angulon 6.8/90mm viewing angle 100° - image circle 216mm (at f/22)

**WDS-536** features Schneider Apo-Symmar 5.6/150mm viewing angle 72° - image circle 220mm (at f/22)

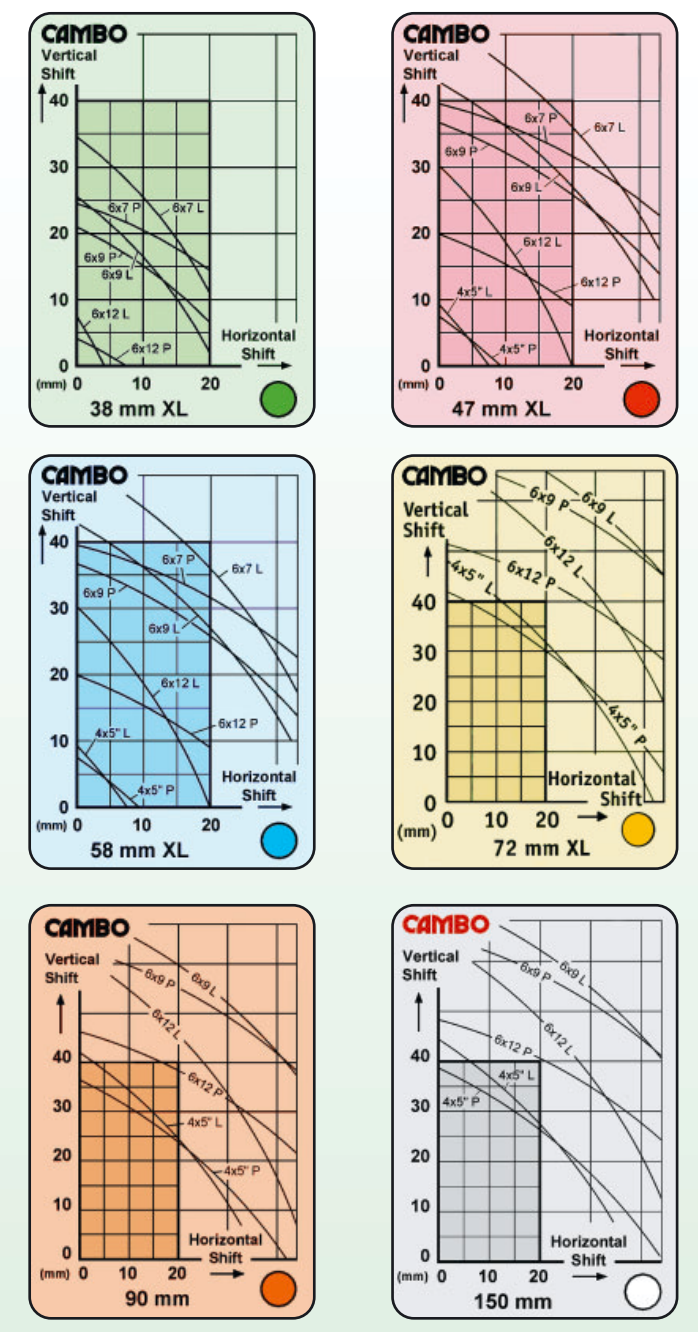
All Lenspanel Systems are available as additional accessories including focal plane adjustment set.

A number of other Schneider lenses can be custom fitted to the Cambo Wide DS camera body on request.

For your reference:  
4x5" image diagonal is appr. 153mm  
6x12cm image diagonal is appr. 125mm  
6x9cm image diagonal is appr. 99mm  
6x7cm image diagonal is appr. 91mm

For plenty of wide-angle versatility, the Wide DS system offers a choice of six different focal length lenses, each with its own coverage characteristics. Choose from Schneider Super Angulon 38mm XL, 47mm XL, 58mm XL, 72mm XL, 6.8/90mm and Schneider's Apo-Symmar 150mm each with helical focusing mount on interchangeable lens plates.

Six diagrams show the horizontal and vertical lens movements for each lens related to the film formats 4x5", 6x12cm, 6x9cm and 6x7cm in landscape(L) or portrait(P) orientation at f/22.

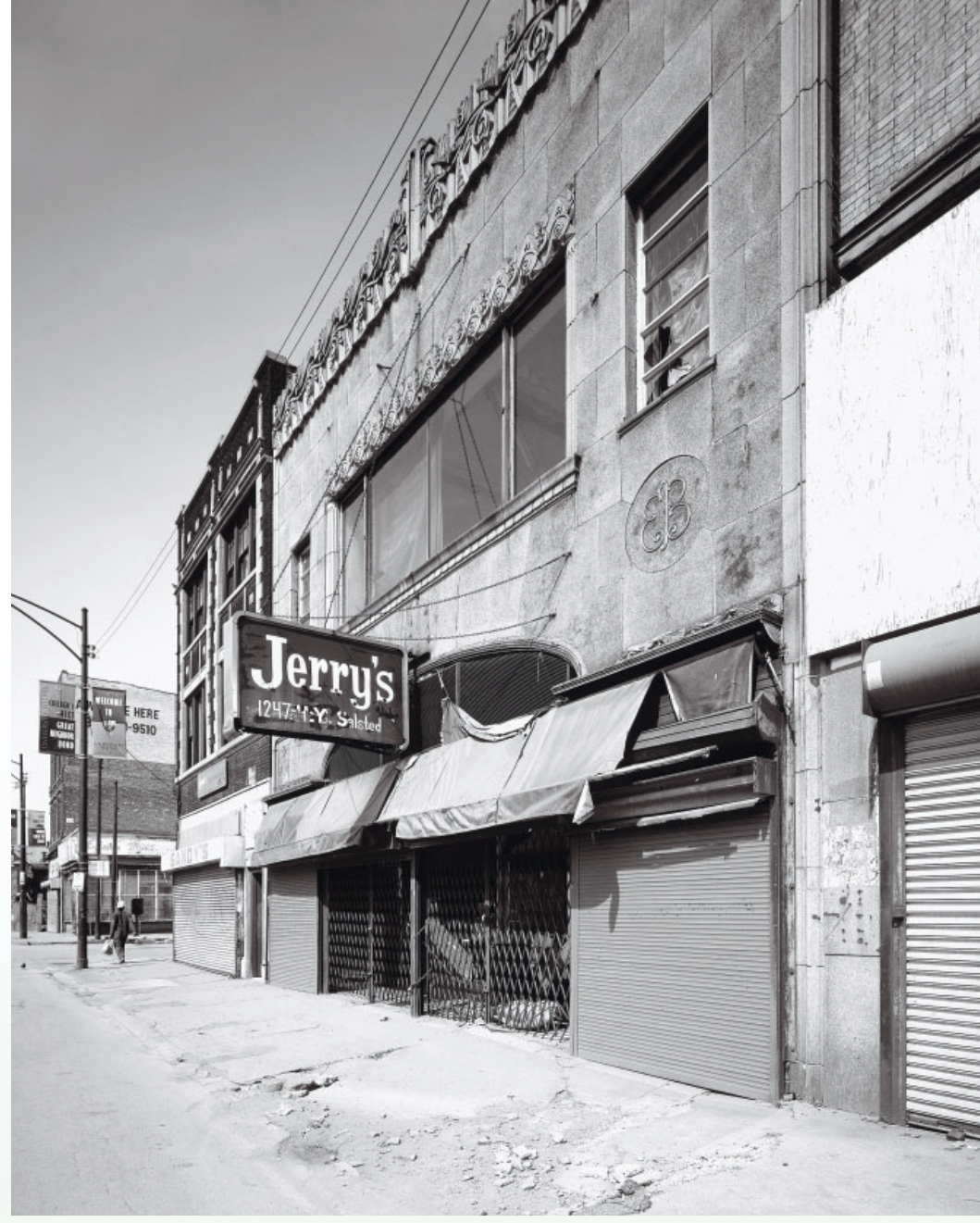


This compact 4x5 camera accepts a variety of wide angle lenses, and now provides "double shift" movements — rise-and-fall and lateral shifts — which are perfect for anyone shooting exteriors and interiors, cityscapes and landscapes. Compared to other large format cameras, the Cambo Wide DS is extremely compact, portable and easy to operate. In addition to accepting 4x5 sheet film holders, the Wide DS takes 120 roll film holders which open up your shooting options to 6x4.5, 6x7, 6x9 and 6x12cm formats. A new rotating back makes it easy to switch formats from horizontal to vertical, except for the 38 mm which has a landscape ground glass back.

For additional shooting convenience, the Cambo Wide DS accepts a wide variety of Cambo accessories. A new optical viewfinder has been designed with a 120° viewing angle to ensure usage with all available lenses and film formats. The camera will also accept a range of viewing hoods, center filters, Polaroid backs, as well as sheet and roll film holders.



For the use of digital backs in combination with the 38, 47, 58 and longer focal lengths Cambo has graflock plates available to match the ground glass plane.



photograph by James I. McCarthy

The Cambo Wide DS is made of a high-quality aluminum alloy for maximum stability, smooth and precise movements and lightweight portability. All movements are calibrated for precise repeatability and referencing. The convenient handgrip is made of handsome wood with rounded corners for a secure and safe grip and includes a built-in cable release. Three spirit levels make it easy to level the camera for horizontal and vertical alignment, which is always important in critical architectural work. Aluminum parts are either anodised to protect against corrosion or painted with a black metallic paint for protection from the elements. For tripod mounting, a 3/8" thread is provided, but the camera is also compatible with Cambo's quick-release system used with the CBH-5 QR Ball Heads.