



CAMBO



2006

V-Series
video booms

Enhance Your Professional Video Making!

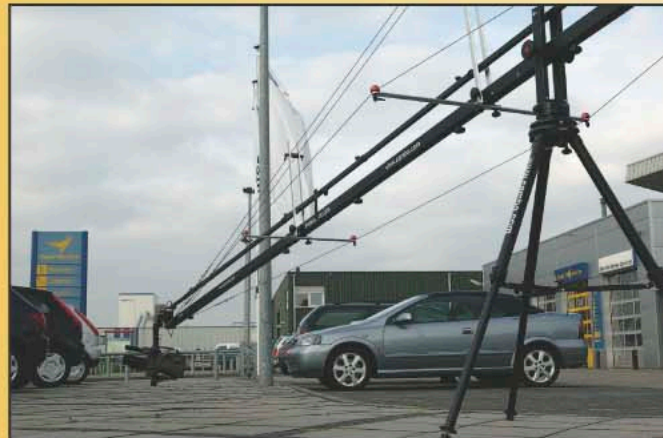
The Cambo range of professional video booms and accessories are designed for today's videographer. These compact, portable and easy-to-use video booms will operate with a wide range of video cameras — from compact digital units to the latest ENG models — and are designed to enhance your work with professional boom effects.



V15 in use on location with optional MPT-9, LCD screen and tripod/dolly



ARTES with tilt head in use on location with optional LCD screen and tripod/dolly



V40 in use on location with optional PT-900 and TVB-100
V-40 is extended with 4 meter, supported with cable stabilisation system VCSS-400-60, V-46 and LCD screen



ARTES Video Boom System

The Artes Video Boom System provides a steady camera platform for the starting Videographer. The System is delivered as a kit, partly premounted. After the first set-up, supported by a very clear instruction, there are no tools needed for quick mounting and de-mounting. The Boom system is modular extended and this way usable in at least two different set-ups. The central unit has four locking knobs for applying friction to the vertical boom movement and to make disassembling easier. The central rotation platform has a low friction bearing system with a rotation brake. It fits to all 75 and 100mm video tripod cups.



Artes shown with optional MPT-9

-  Weight of Boom: 10 kg
-  Length of Arm: 159-234 cm
-  Camera Range: 5 - 10 kg
-  Assembly Time: 10 min



Modular system for easy storage and assembly



Artes shown with optional MPT-9

- **Modular design**
- **Lightweight construction**
- **Economically priced**
- **Quality materials**
- **Provision for screen mount**
- **Option for Pan/Tilt unit**

The Artes weight system is based on a set of standard fitness weights (not included) with a set of small fine tuning weights (supplied with the kit). The system is expandable and mountable as side weights.

* Tripod and weights not included

- Telescopic design
- Full panoramic monopod function
- Provision for screen mount
- Ideal for DV-Cameras
- Quick setup

V5

-  Weight of Boom: 5,5 kg
-  Length of Arm: 135-275 cm
-  Camera Range: up to 3 kg
-  Assembly Time: 2 min

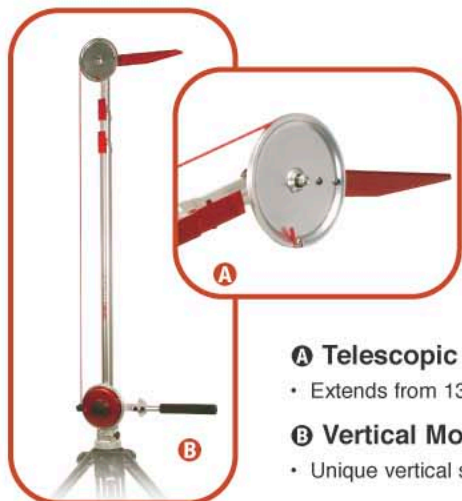


This lightweight telescopic DV boom is designed to carry a maximum load of 3kg (camera including accessories) and has a standard mechanical tilt option of +/- 60°.

The V5 has an extension range from tripod to boom end of 135 to 275cm and uses standard fitness weights for counterweight. The boom tail slides into the main boom section for counterweight adjustments or packing. For even more compactness, the weight bar and weights can be removed with one simple knob.

The V5's unique vertical setup adds to its compactability. The steering handle points forward or in the opposite direction depending on the user's goal. This setup provides a vertical range of 122cm to 262cm above the tripod.

* Tripod and weights not included



A Telescopic Boom Arm

- Extends from 135 to 275cm

B Vertical Monopod Setup

- Unique vertical setup offers extra compactness

C Mechanical Tilt feature of +/- 60°

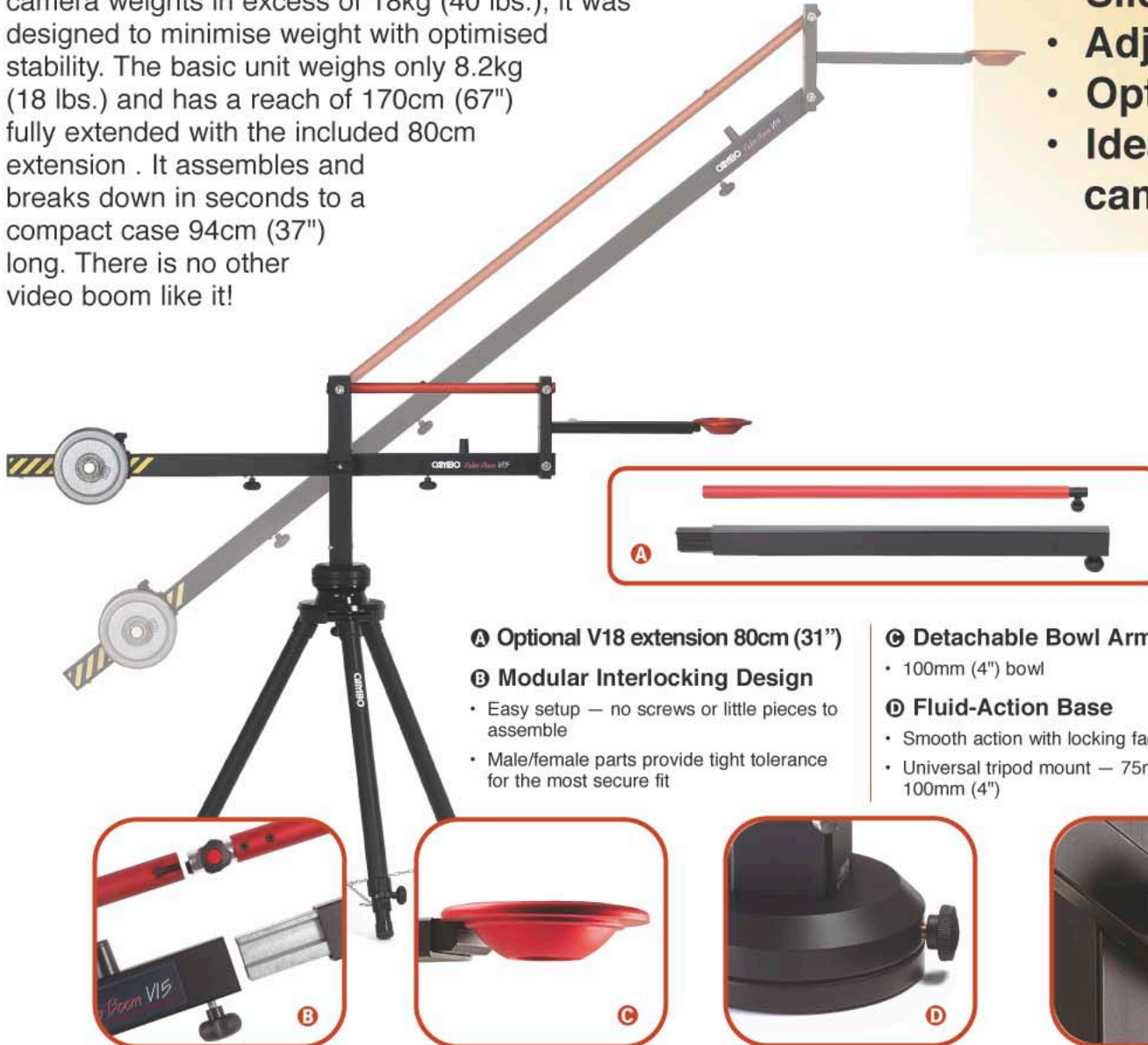
- Tilt handle can be adjusted to fit users' needs
- Length of steering cable is adjustable
- Excess cable conveniently rolls into wheel
- Boom offers quick setups, flexible uses, lightweight portability




V15

The V15 is a rugged, lightweight jib. Though it accepts camera weights in excess of 18kg (40 lbs.), it was designed to minimise weight with optimised stability. The basic unit weighs only 8.2kg (18 lbs.) and has a reach of 170cm (67") fully extended with the included 80cm extension. It assembles and breaks down in seconds to a compact case 94cm (37") long. There is no other video boom like it!

- Modular compact design
- Precision bearing base
- Provision for screen mount
- Sliding counterweight
- Adjustable friction control
- Option for Pan/Tilt Unit
- Ideal for DV and Broadcast cameras



-  Weight of Boom: 8,2 - 9,6 kg
-  Length of Arm: 89-169 cm
-  Camera Range: up to 20 kg
-  Assembly Time: 5 min

* Tripod and weights not included

A Optional V18 extension 80cm (31")

B Modular Interlocking Design

- Easy setup — no screws or little pieces to assemble
- Male/female parts provide tight tolerance for the most secure fit

C Detachable Bowl Arm

- 100mm (4") bowl

D Fluid-Action Base

- Smooth action with locking facility
- Universal tripod mount — 75mm (3") and 100mm (4")

E Central Friction Knob

- Quick setup and stability for fixed-height shots

F Counterweight System

- Easily adjusts for different cameras (weights not included)

- Modular heavy duty design
- Friction controlled movements
- Option for stabilisation set
- Precision ballbearing base
- Long reach extendable
- Sliding counterweight
- Provision for screen mount
- Extended accessory system



* V40 shown in extended version with PT900 and VCSS system

* Tripod and weights not included

The V40 is the most complete boom system in the industry. Its modular approach offers sophisticated versatility you can't get anywhere else. Its unique interlocking joining system provides setup in minutes without sacrificing weight capacity. New extension bars allow for quick and easy addition of extensions from 0.6m to 5m (2 – 16') long for a possible reach of just under 7m (23').

The V40 features a smart counter balance system that uses standard weights (weights not included). Disassembled, the longest component of this system measures less than 1m (40"). The basic V40 is weighing only 11kg (25 lbs.), this compact boom travels with you anywhere — without breaking your back!

A V46 Control Frame *

- Smooth control of movements
- Convenient location for joystick control and LCD screen
- Steering handle located behind weight system
- No changes to VCSS cables

* Available as option



V40 Features:

B V43 Detachable Bowl Arm

- 100mm (4") bowl arm
- Quick detachment to add accessories like the PT90/900



C Fluid-Action Base

- Smooth action with locking facility
- Universal tripod mount — 75mm (3") and 100mm (4")



D Counterweight System

- Provides easy adjustment for a variety of camera weights and boom lengths
- System includes one V47 weight support



E Modular Interlocking Design

- Easy setup — no screws or little pieces to assemble
- Male/female parts provide tight tolerance for the most secure fit



	Weight of Boom:	from 11.3 kg
	Length of Arm:	165-665 cm
	Camera Range:	7 - 30 kg
	Assembly Time:	10 - 20 min

Go to Great Lengths

This V11 Levelling Disc can be used as an accurate levelling guide and is ideal for other tripods without a built-in level.



TVB-100 Video Tripod

This high-tensile aluminium tripod is built to withstand a lifetime of rough handling. It supports over 100kg (220lbs.) The 100mm ball-socket mount has a hinged plate, allowing finetune adjustments for levelling. The TVB-100 includes an adjustable spreader attachment to provide added rigidity and structured support.



N Extension Bars

- V54 0.6 m (24") Extension length
- V55 1 m (40") Extension length
- V57 2 m (79") Extension length

V54 is designed as tail extension
 V55 is designed as arm extension
 V57 is designed as arm extension
 Max. added extension length is 5 m
 For each combination exists a VCSS setup



F V42 Auxiliary Handle

- 22mm handle for combining zoom and boom control in one hand

G ZRC-1 DV-Lanc Control Unit

- Enables you to use Mini DV camcorders with professional tripods
- Can be mounted on all tripod arms up to 24mm (1") in diameter

H V47 Counterweight System

- Easily adjustable counterweight system (weights not included)

I V11 Levelling Disc

- For use with tripods without a built-in level

J Transport Case

- Transport softcases are available for all video boom models

K V445 Flight Case

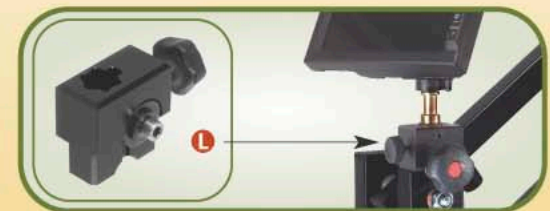
- Dedicated flight case for V-40 incl. tripod and extensions

L V44 LCD Mount Adapter

- Holds LCD screen in place
- Can take a "swan neck" or "magic arm" for more flexibility

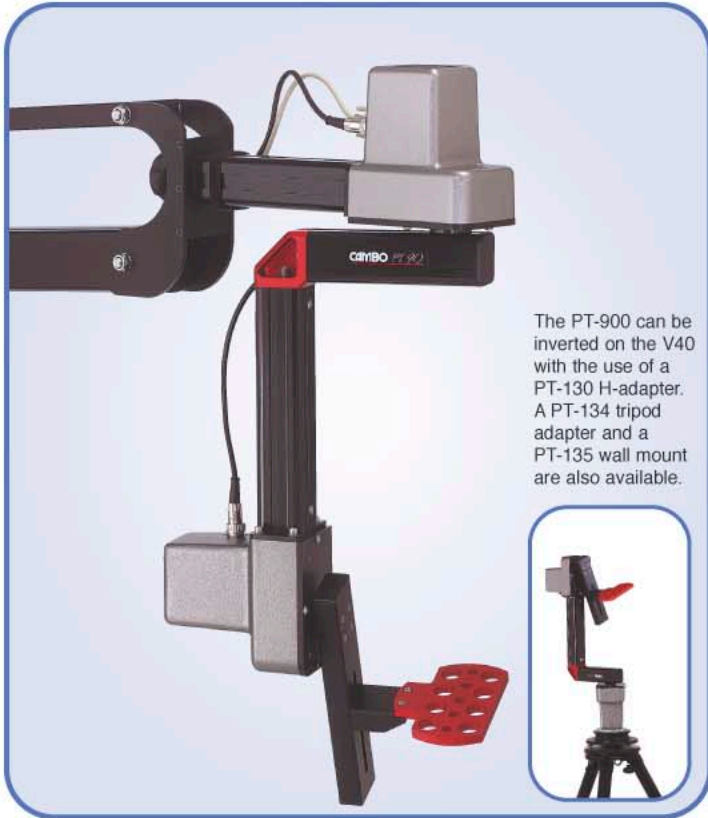
M Video Cable Stabilisation System (VCSS)

- Adds support to accommodate heavier camera weights
- Removes unwanted movement by stiffening boom arm
- Available for V-40 with added extensions of 1 meter and more



Electronic Pan-Tilt Unit for use with V40 Boom

PT-900



The PT-900 can be inverted on the V40 with the use of a PT-130 H-adapter. A PT-134 tripod adapter and a PT-135 wall mount are also available.

Designed for the DV and Mini DV camera range, the PT-900 has a weight capacity of 10kg (22 lbs.). It provides precision-controlled motorised camera movements with the V40 Video Boom. The PT-903 Control Unit operates the two motorised units for full camera control with 350° pan and/or tilt. A switchable direction control allows you to set rotation direction on both movements or switch either off. The maximum speed is determined by two independent controls. Included is a 100 – 240V 12V DC power supply with a XLR-4 output connector. An optional V-battery mount is also available to accommodate many industry-standard batteries. The PT-900 has standard an integrated LANC signal put-through connection.



PT-903 Control Unit

PT-900 includes

- Camera platform
- Mount for V-40
- Joystick control
- AC/DC power
- Cables V40 length

Options

- Cables 5, 10, 20m
- Battery power
- Accessories

B PT930 Battery Kit

- 4000 mAh capacity per battery
- 2 batteries per kit
- Includes multivoltage charger
- Includes power for LCD screen



C PT150 Joystick Mount

- Advised for mounting on the V46
- dedicated to hold the PT-903 Joystick unit



D PT190 Flight Case

- Dedicated flight case for PT900
- Optimised protection
-



E ZRC-1 DV-Lanc Control

- DV-L works with LANC protocol
- separate model ZRC-2 for the Panasonic DVX available



The ZRC-1 DV-Lanc is a remote zoom and focus grip control for Mini-DV camcorders. The zoom speed is controlled by the amount of pressure applied to the zoom button. The ergonomic design also includes recorder start-stop switch and a camera on-off switch.

MPT-9

Mechanical Pan-Tilt Unit for use with Cambo Booms

The MPT-9 Mechanical Pan Tilt unit fits directly onto the Cambo V15 boom and uses a small adapter set to fit the V40. The camera unit weighs 2.3kg (22 lbs.) and supports cameras up to 10kg (5lbs). While the standard control unit has a combined pan-tilt handle, an optional handle set is available for independent pan and tilt control.

Control units are attached to a modular tube frame that allows for personalized setups for the V15 and V40.

The optional handle set also provides remote camera zoom and focus control possibilities.

Pan and tilt rotations are possible up to 340°, depending upon the flexibility of the setup.

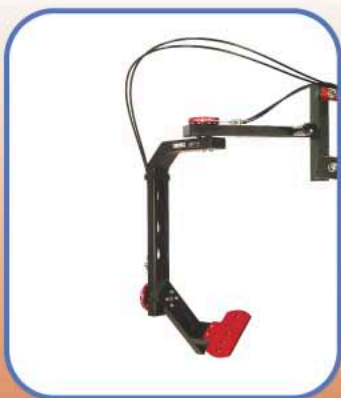


The camera unit's fluid friction system makes extremely smooth combined pan and tilt movements possible. The MPT-9 now has an adjustable friction control.

- **MPT-9 is available for**
- ARTES
- V15 normal setup
- V15 with V-18 extension
- V40 normal setup
- V40 with 1m extension
- V40 with 2m extension
- V40 with 3m extension
- V40 with 4m extension
- V40 with 5m extension

- Interchangeable cable sets are available for all setups

- Adjustable friction control
- Maintenance free cables
- Optional extra handle set



- **Economic lightweight design**
- **Modular heights**
- **Low position possibilities**
- **Location friendly**
- **Pneumatic camera support**
- **Compatible with several dollies**

Especially for the VPS-1 Column, Cambo developed a compact lightweight foldable dolly VPD-9 that remains on the column while folded. The Column also fits the Miller 480, 481, 483 and Manfrotto 114MV Dolly, depending on the configuration choice.

The VPD-9 Dolly shape makes a low camera position possible while the 35cm vertical stroke is maintained. For a higher reach are extensions available: 150mm and 300mm for total modularity.

A spider, supplied with the VPD dolly allows for a camera system load possible up to 20 kg.

Pedestal

The Cambo Pedestal Column is a steady, versatile though lightweight camera platform. An adjustable air-system provides accurate and effortless pneumatically supported camera positioning.

The top unit including steering wheel and 100mm bowl is also mountable directly on the Dolly Adapter or can be placed on a table for special set-ups.



A VPS-1 Pedestal Column

- Pneumatic height support
- High pressure handpump included
- 100mm bowl
- Optimised use with Cambo VPD-9 dolly
- Compatible with Manfrotto or Miller dolly

B VPD-9 Dolly

- Foldable design while mounted
- Column mount as low as possible

C VPD-150 Extension Tube

- Extends height of pedestal with 15 cm
- Quick to mount

D VPD-300 Extension Tube

- Extends height of pedestal with 30 cm
- Quick to mount

E VPD-510 Cable Movers

- Optional set of 3 protectors
- Avoids driving over cables

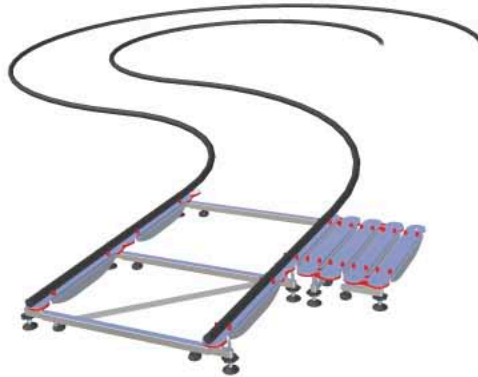


Main Specifications:

VPS-1: 65x30x30 cm
 VPS-1 Weight: 4.4 kg
 Max. load incl. 20 kg
 Vertical reach: 76 - 111 cm
 VPD-9 Weight: 4.1 kg

UniTrack

The latest addition to Cambo's expanding range of Video Support Products is this flexible, stable, easy to use and modular UNI TRACK System. Quick to set up on location, easy to level and available in several length modules, it allows the videographer to lay out and shape the track according to any desired routing. From exact straights to swings or curves with a radius of 1.5 meter (5'), it fits all in the system.



Main Specifications:

Track Width: 62 cm
 Track Weight: 6.4 kg/m
 Packed Dim.: 52x95x22 cm
 (per 5 mtr Track)

System Components

UTS-5 : Foldable UNI TRACK with a working length of 5 m (16')
 UTS-10: Foldable UNI TRACK with a working length of 10 m (32')
 UTS-15: Foldable UNI TRACK with a working length of 15 m (48')

The UTS-5 folds up easily in to 2 packages of lightweight aluminium supports and one roll of 15 meter rubber track.



A Tight Curves

- Flexible modular layout
- Extendable sections of 5m each
- Curves into 1.5m (5') radius
- Quick and secure set up

B Adjustable support base

- Every support base can - if needed be adjusted for levelling on uneven ground within the range of 5 cm (2")

C VPD-15 UniTrack dolly

- Designed for pedestal VPSF-600
- Also usable with pedestal VPS-1

D VPSF-600 Pedestal

- fixed height of 60 cm (2')
- 100mm bowl adapter

E VPS-962 Low position unit

- allows lowest position on dolly
- 100mm bowl adapter

F UTFC Flight case

- dedicated Flight case designed for the Uni Track System
- available as accessory or included with the track system
- Stores 5m of complete track system
- Dimensions: 89x69x47cm / 4 wheels



	A	B	C	D	E	F	G	H	weight	weight capacity ***
ARTES short setup	940mm (37")	1600mm (63")	1340mm (52½")	2240mm (88")	1120mm (44")	780mm (30½")	340mm (13½")	1120mm (44")	8.1kg (18 lbs.)	10kg (22 lbs.)
ARTES normal setup	940mm (37")	2350mm (92½")	2090mm (96½")	3540mm (139")	1770mm (69½")	1430mm (56")	340mm (13½")	1770mm (69½")	9.6kg (21 lbs.)	5kg (11 lbs.)
V5** min.	850mm (33½")	1350mm (53")	1050mm (41½")	1800mm (71")	900mm (35½")	720mm (28")	180mm (7")	900mm (35½")	5.5kg (12 lbs.)	3kg (6½ lbs.)
V5** max.	850mm (33½")	2750mm (108")	2450mm (96½")	4220mm (166")	2110mm (83")	1930mm (76")	180mm (7")	2110mm (83")	5.5kg (12 lbs.)	3kg (6½ lbs.)
V15	650mm (25½")	888mm (35")	438mm (17½")	794mm (31¼")	397mm (15½")	41mm (1½")	356mm (14")	397mm (15½")	8.2kg (18 lbs.)	20kg (44 lbs.)
V15+ 0.8m ext.	650mm (25½")	1697mm (67")	1238mm (48½")	2220mm (87½")	1110mm (43½")	755mm (29¾")	356mm (14")	1110mm (43½")	9.6kg (21 lbs.)	18kg (40 lbs.)
V40	960mm (37¾")	1648mm (65")	1226mm (48½")	2123mm (83½")	1061mm (41¼")	682mm (27")	379mm (15")	1061mm (41¼")	11.3kg (25 lbs.)	30kg (66 lbs.)
V40+ 1m ext.	960mm (37¾")	2648mm (104¼")	2226mm (87½")	3855mm (152")	1927mm (76")	1548mm (61")	379mm (15")	1927mm (76")	14.1kg (31 lbs.)	25kg (55 lbs.)
V40+ 2m ext.*	1560mm (61½")	3648mm (143¾")	3226mm (127")	5586mm (220")	2793mm (110")	2414mm (95")	379mm (15")	2793mm (110")	20.1kg (44 lbs.)	16.1kg (36 lbs.)
V40+ 3m ext.*	1560mm (61½")	4648mm (183")	4226mm (166½")	7318mm (288")	3659mm (144")	3280mm (129")	379mm (15")	3659mm (144")	23.7kg (53 lbs.)	13.8kg (29 lbs.)
V40+ 4m ext.*	1560mm (61½")	5648mm (222")	5226mm (206")	9050mm (356")	4525mm (178")	4146mm (163")	379mm (15")	4525mm (178")	26.1kg (57 lbs.)	11.5kg (25 lbs.)
V40+ 5m ext.*	1560mm (61½")	6648mm (262")	6226mm (245")	10782mm (425")	5391mm (212")	5012mm (197")	379mm (15")	5391mm (212")	29.3kg (64 lbs.)	7kg (15 lbs.)

* V40 with 600mm tail extension and VCS stabilisation

** V5 tail length from 160-850mm: all tail and front extensions are possible between 'in' and 'out'

*** weight indicated is camera including accessories, bowl arm, MPT-9 or PT-900

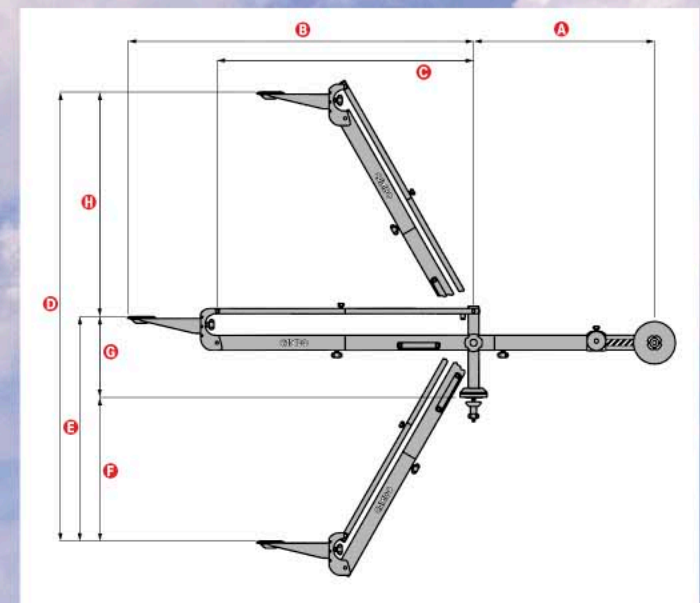
All models and technical specifications featured in this brochure may be subject to change without notice.

CAMBO VIDEO & BROADCASTING PRODUCTS BY
HAATLANDERDIJK 45 - P.O. BOX 200
NL-8260 AE KAMPEN
THE NETHERLANDS
PHONE: +31 38 3314644
FAX: +31 38 3315110
EMAIL: info@cambo.com
WEB: www.cambo.com/video

Your CAMBO Distributor:



CAMBO is a registered trademark. All rights reserved.



Reference Summary Booms:

ARTES Components

- ARTES Boom
- Tilt Unit
- Counterweight mount (weight not included)

V5 Components

- V5 Boom telescopic with integrated mechanical tilt
- Counterweight mount (weight not included)

V15 Components

- V15 Boom with 0.8 m extension (31.5")
- V13 Bowl adapter 100mm
- Counterweight mount (weight not included)

V40 Components

- V40 Boom
- V43 Bowl adapter 100mm
- Integrated counterweight system (without weights)

MPT-9 Components

- Control unit
- Camera unit
- Cable set (dedicated)
- Control frame for V15

PT-900 Components

- Pan Tilt unit
- PT132 camera plate
- PT903 Joystick unit
- PT904 Power supply
- PT912 5m control cable
- PT920 Lanc cable